

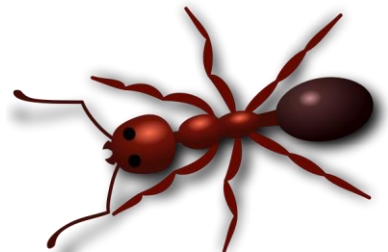
Name: _____

All about Ants

Word Search



JOINTED LEGS	ANTENNAE	ABDOMEN
LEAF CUTTER	CHAMBERS	BIOMASS
FORMICIDAE	HONEYPOT	NURSERY
MANDIBLES	RED FIRE	TUNNELS
PHEROMONE	SOLDIERS	WORKERS



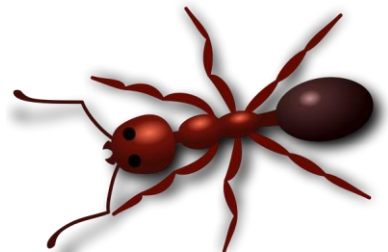
Name: _____

All about Ants

Word Search



- | | | |
|--------------|----------|---------|
| JOINTED LEGS | ANTENNAE | ABDOMEN |
| LEAF CUTTER | CHAMBERS | BIOMASS |
| FORMICIDAE | HONEYPOT | NURSERY |
| MANDIBLES | RED FIRE | TUNNELS |
| PHEROMONE | SOLDIERS | WORKERS |



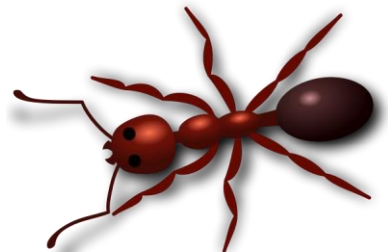
Name: _____

All about Ants

Word Search

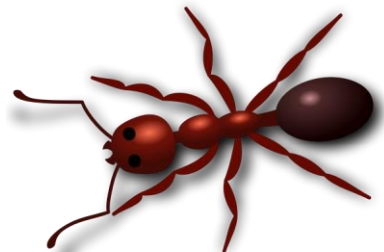
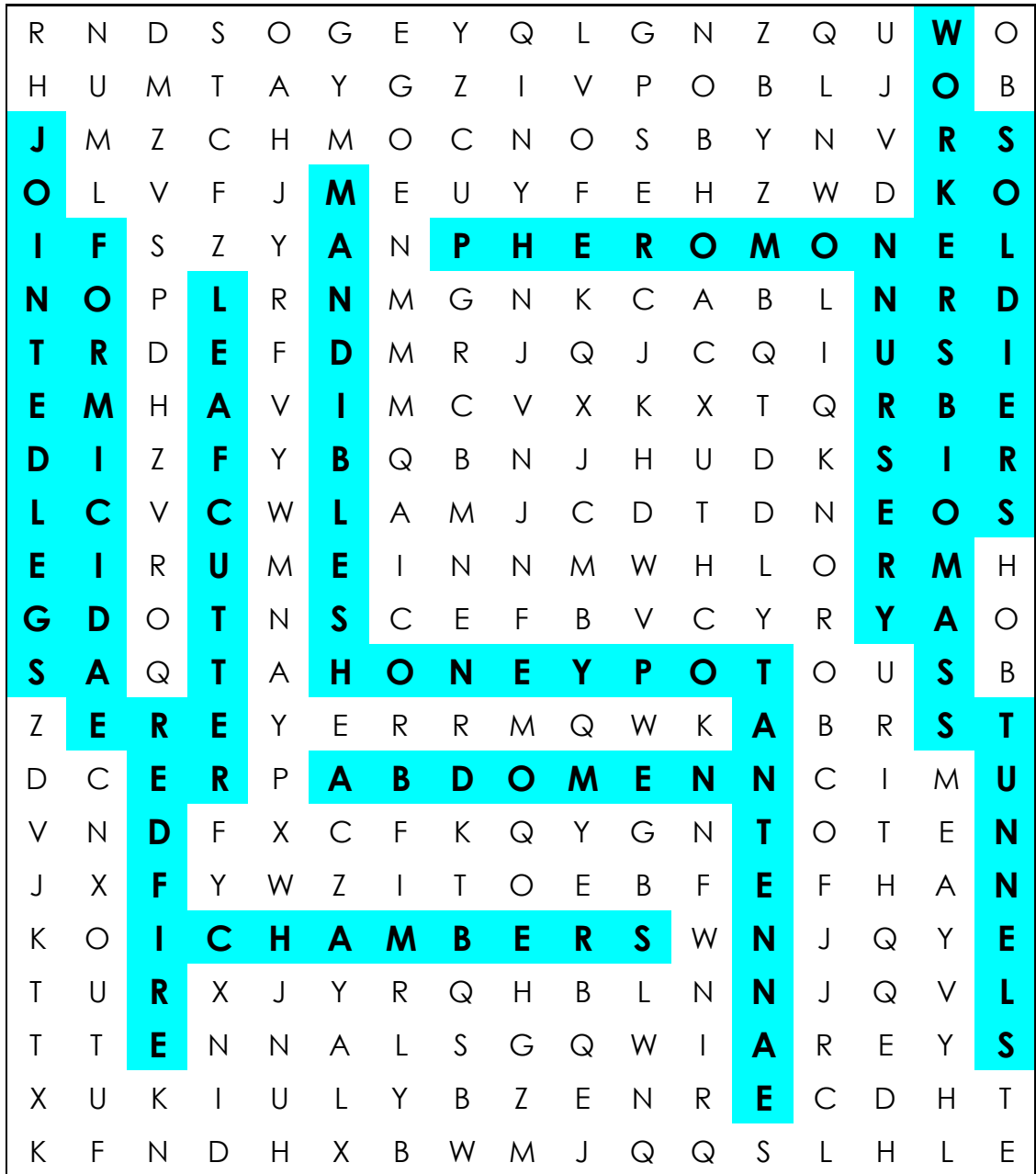


- | | | |
|--------------|----------|---------|
| JOINTED LEGS | ANTENNAE | ABDOMEN |
| LEAF CUTTER | CHAMBERS | BIOMASS |
| FORMICIDAE | HONEYPOT | NURSERY |
| MANDIBLES | RED FIRE | TUNNELS |
| PHEROMONE | SOLDIERS | WORKERS |



All about Ants

Word Search

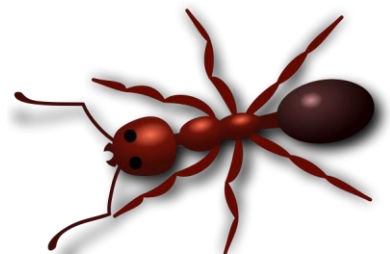


- | | | |
|--------------|----------|---------|
| JOINTED LEGS | ANTENNAE | ABDOMEN |
| LEAF CUTTER | CHAMBERS | BIOMASS |
| FORMICIDAE | HONEYPOT | NURSERY |
| MANDIBLES | RED FIRE | TUNNELS |
| PHEROMONE | SOLDIERS | WORKERS |



All about Ants

Word Search

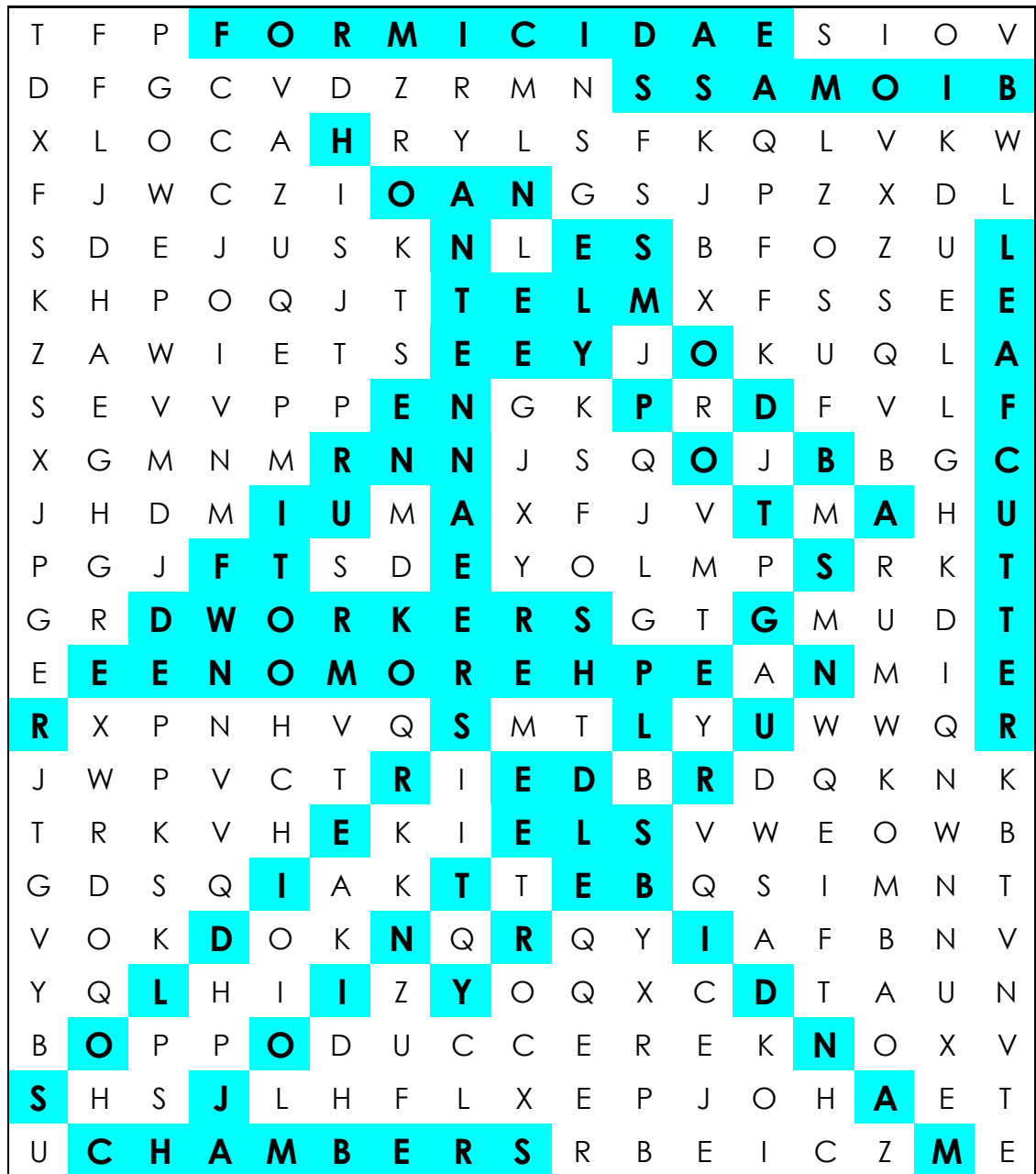


- | | | |
|--------------|----------|---------|
| JOINTED LEGS | ANTENNAE | ABDOMEN |
| LEAF CUTTER | CHAMBERS | BIOMASS |
| FORMICIDAE | HONEYPOT | NURSERY |
| MANDIBLES | RED FIRE | TUNNELS |
| PHEROMONE | SOLDIERS | WORKERS |



All about Ants

Word Search



- | | | |
|--------------|----------|---------|
| JOINTED LEGS | ANTENNAE | ABDOMEN |
| LEAF CUTTER | CHAMBERS | BIOMASS |
| FORMICIDAE | HONEYPOT | NURSERY |
| MANDIBLES | RED FIRE | TUNNELS |
| PHEROMONE | SOLDIERS | WORKERS |

